

# AMAX-5080

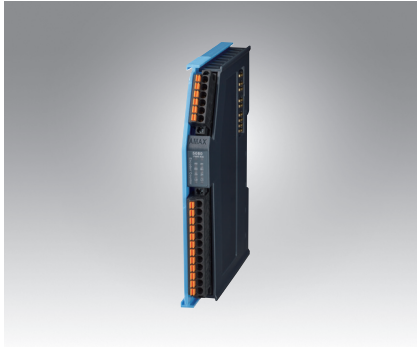
# AMAX-5081

# AMAX-5082

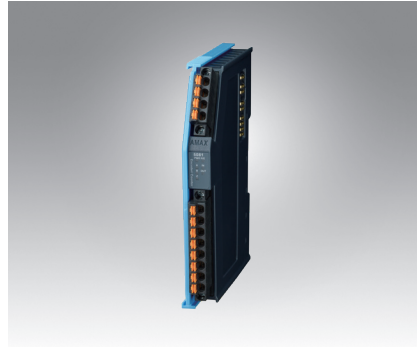
## 2-ch Counter/Encoder Input Module

## 1-ch TTL/RS-422 Encoder/Counter Module

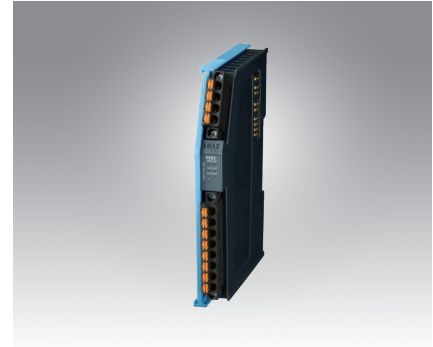
## 1-ch SSI Encoder Module



AMAX-5080



AMAX-5081



AMAX-5082



### Specifications

#### General

- **Certification** CE, FCC class A
- **Connector** Pluggable 6P+12P push-in terminal (#28 ~ 16 AWG)
- **Enclosure** PC (UL 94V-0)
- **Power Consumption** 2W@24V<sub>DC</sub>
- **Protocol** EtherCAT
- **Transmission Rate** 100Mbps
- **Distributed Clock** Supported, default inactive
- **LED Indicator** PWR, RUN, A+, A-, B+, B-, Z+, Z-, L+, L-

#### Counter/Encoder Input

- **Channels** 2
- **Counting Range** 32-bit
- **Modes** Counter Encoder x4 (up/down, bi-direction, up, A/B/Z Phase, DI latch)
- **Signal Input** Logic 0: -3...+5 V (EN 61131-2, type 1/3)  
Logic 1: 11...30 V (EN 61131-2, type 3)

#### Frequency

- **Input Frequency** 1MHz, Max. 4M increments/s (with 4-fold evaluation)

#### Protection

- **Isolation Voltage** 2,000 V<sub>DC</sub>

#### Environment

- **Operation Temperature** -25~60°C (vertical mounted)
- **Storage Temperature** -40~85°C
- **Relative Humidity** 95% (non-condense)

### Ordering Information

- **AMAX-5080-A2** 2-ch Counter/Encoder Input Module

### Specifications

#### General

- **Certification** CE, FCC class A
- **Connector** Pluggable 4P+8P push-in terminal (#24~16 AWG)
- **Enclosure** PC (UL 94V-0)
- **Power Consumption** 3W@24V<sub>DC</sub>
- **Protocol** EtherCAT
- **Transmission Rate** 100Mbps
- **Distributed Clock** Supported, default inactive
- **LED Indicator** PWR, RUN, A, B, Z, IN, OUT

#### Counter/Encoder Input

- **Channels** 1
- **Counting Range** 32-bit
- **Modes** Counter Encoder x4, Pulse/Dir., CW/CCW, Pulse/Gate, Pulse Train Output
- **Power Supply** +5V, 100mA
- **Auxiliary IO** DI \*1, DO\*1 (5V<sub>DC</sub>)
- **Signal Input** Single-ended 5V RS-422 differential

#### Frequency

- **Input Frequency** 10MHz, Max. 40M increments/s (with 4-fold evaluation)

#### Protection

- **Isolation Voltage** 2,000 V<sub>DC</sub>

#### Environment

- **Operation Temperature** -25~60°C (vertical mounted)
- **Storage Temperature** -40~85°C
- **Relative Humidity** 95% (non-condense)

### Ordering Information

- **AMAX-5081-A** 1-ch TTL/RS-422 Encoder/Counter Module

### Specifications

#### General

- **Certification** CE, FCC class A
- **Connector** Pluggable 4P+8P push-in terminal (#24~16 AWG)
- **Enclosure** PC (UL 94V-0)
- **Power Consumption** 3W@24V<sub>DC</sub>
- **Protocol** EtherCAT
- **Transmission Rate** 100Mbps
- **Distributed Clock** Supported, default inactive
- **LED Indicator** PWR, RUN, CLK, Data, DO0, DO1, LATCH

#### Counter/Encoder Input

- **Channels** 1
- **Counting Range** ST: 0~16-bits, MT: 0~16-bits
- **Modes** SSI signal with Binary or Gray code
- **Power Supply** +12V, 80mA
- **Auxiliary IO** DI \*1, DO\*2 (24V<sub>DC</sub>)
- **Signal Input** RS-422 differential (serial)

#### Frequency

- **Input Frequency** Up to 2MHz (Configurable)

#### Protection

- **Isolation Voltage** 2,000 V<sub>DC</sub>

#### Environment

- **Operation Temperature** -25~60°C (vertical mounted)
- **Storage Temperature** -40~85°C
- **Relative Humidity** 95% (non-condense)

### Ordering Information

- **AMAX-5082-A** 1-ch SSI Encoder Module