

Advantech AE Technical Share Document

Date	04 / 19 / 2023	Release Note	<input type="checkbox"/> Internal <input checked="" type="checkbox"/> External
Category	<input type="checkbox"/> FAQ <input checked="" type="checkbox"/> SOP	Related OS	Win7, Win 10
Abstract	How to enable teaming function on Realtek LAN chip		
Keyword	Realtek / teaming / Win 7 / Win 10		
Related Product			

■ **Problem Description:**

Due to Realtek driver does not provide the teaming function by default, user has no way to setup the teaming function even he download the Diagnostic utility from Realtek website.

■ **Brief Solution - Step by Step:**

There are specific version of Realtek Diagnostic Utility for teaming function. You don't have to run any Windows update or driver update.

For Windows 7 / 8 => Realtek Win7_8.zip

For Windows 10 => Realtek Win10.zip

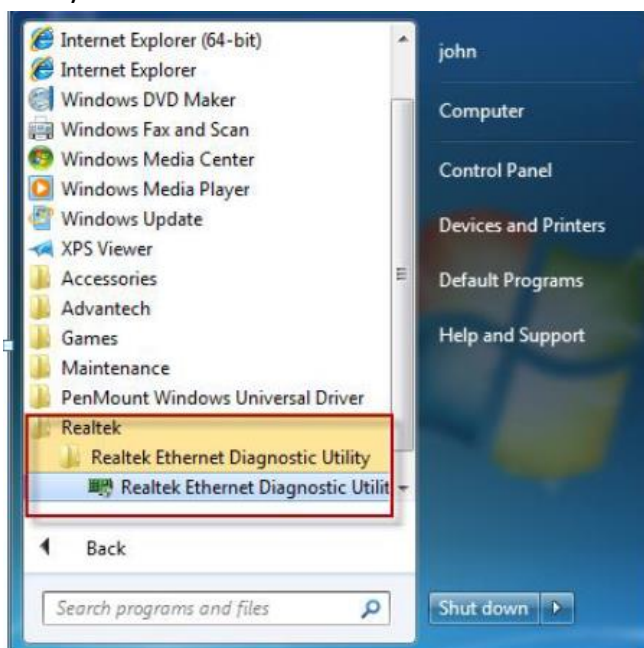
For Realtek8119 => Realk_8119_Win10_V2.0.7.3_0801.zip

Download link:

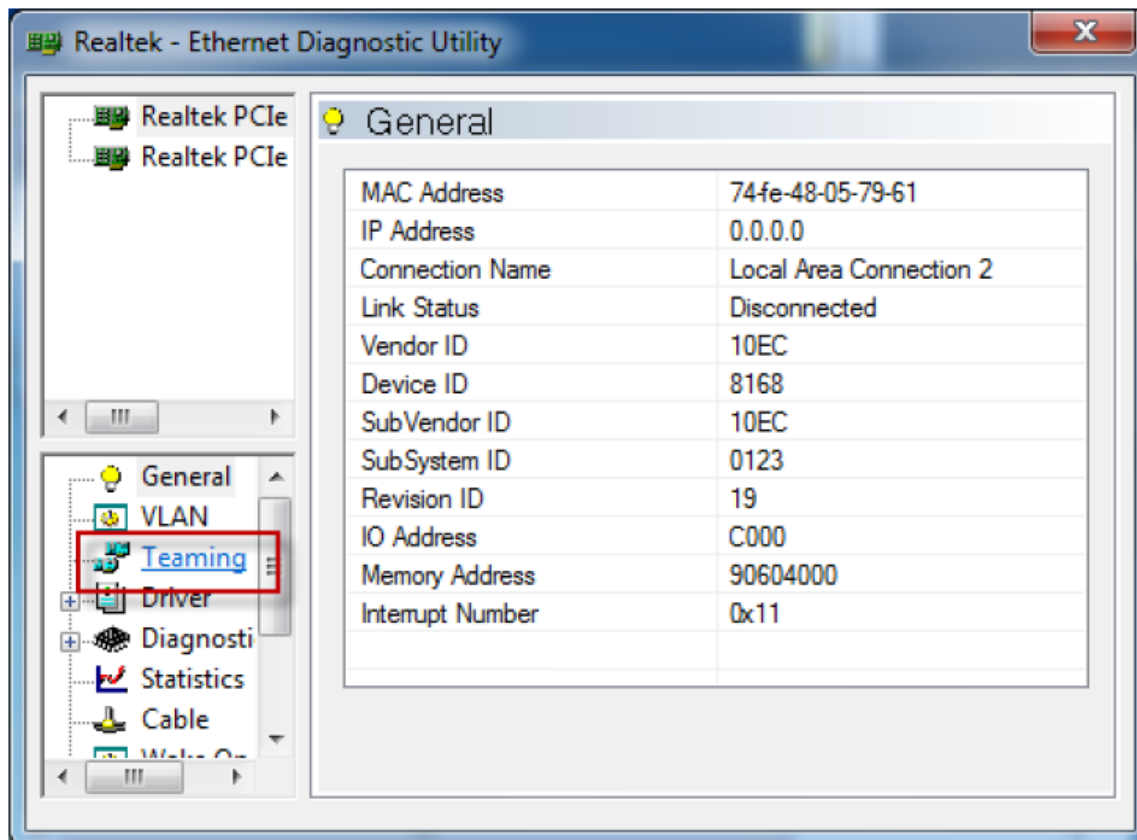
https://drive.google.com/open?id=1a2FS1CTUWv-yxt-cCBkdPFg7Gl4mtrw7&authuser=edison hsiung%40gmail.com&usp=drive_fs

Windows 7 / 8

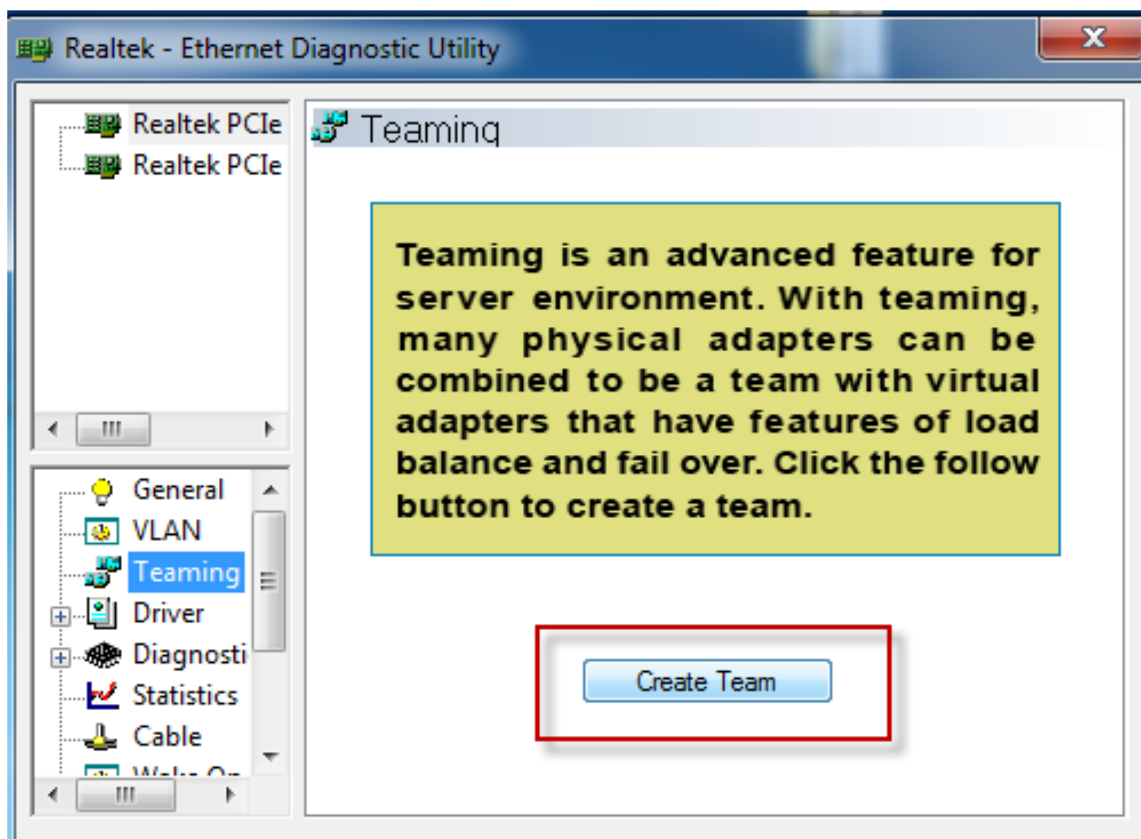
1. Download and unzip the Realtek Win7_8.zip.
2. Install teaming utility
3. Start the Utility software
4. From the start up menu, left click the icon in Programs >Realtek >Realtek Ethernet Diagnostic Utility



5. Select the LAN adapter from the first column then select the teaming function from the second column.

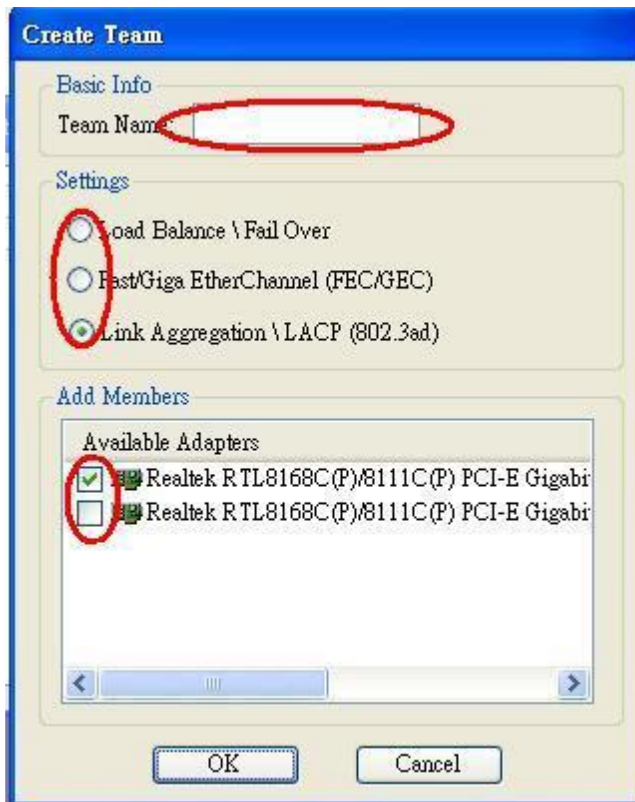


6. Click the icon 'Create Team'



7. Add Member Adapters:

The area shows the similar adapters with the selected adapter. The user can choose adapters on the checkbox. These choosing adapters will become teaming member.



Settings:

There are three teaming modes for user choosing. (Default = 802.3ad)

(1) *Load balance \ Fail Over*

This mode is round-robin method to decide the packets sent by the adapter. For example, if the teaming contains two adapters. The first adapter sends the packet whose number is odd. The other adapter sends the packet whose number is even.

(2) *FEC/GEC*

The mode needs the switch supports FEC/GEC. So, the switch has to setup FEC/GEC mode and which ports are using for teaming.

(3) *Link Aggregation \ LACP (802.3ad)*

The mode needs switch support LACP. LACP is similar with FEC/GEC. But LACP doesn't setup which ports are using for teaming. LACP negotiates the ports with the switch that will make up the team.

Windows 10

1. Unzip and install the “Realtek Win10.zip”.
2. The introduction to set the teaming function are the same as the *Windows 7 / 8* chapter.

